

Mid-Hinged Pole Raising and Lowering Procedure



Step 1 - Preparing the Pole to be lowered:

Only operate pole if wind conditions are still. Attach a 10mm diameter double braided rope to the rope cleat #1 (ROPE CLEAT #1 located as shown in Figure 1 at the base of the skirt). Ensure that the rope is at least two meters longer than the height of the entire pole.

As a precaution, in case the counterweight balance has not been installed correctly, temporarily tie a short piece of rope (ROPE 2) around the column as per Figure 2 below, and tie its ends together to form a safety loop. Be sure to leave at least one meter of slack so that the Pole skirt can be released partially as per Figure 3 below. This will give the operator enough play in the skirt to ascertain that the counterweight has been installed correctly and that the column is sufficiently balanced to be operated safely by hand.

Step 2 – Verifying the Pole is safe to be lowered:

Release the M12 skirt securing bolt (FASTNER #1) and the failsafe bolt (FASTENER #2) located as shown in Figure 1 and steadily pull the skirt away from the column. If the skirt feels well balanced, it will now be safe to remove the short piece of rope (ROPE 2) shown in Figure 2 from around the column base and begin lowering the column, holding firmly onto the long rope (ROPE 1).

Step 3 – Lowering the Pole:

Lower the column with a steady smooth motion, avoiding any jerking movements, which may damage the light fittings, or other equipment mounted on the Pole. Lower the column until the light fittings or ancillary equipment are at a safe working height as per Figure 4 below. Be careful not to lower the column too far to avoid any likelihood of the lights or ancillary equipment striking the ground or the base section of the column.

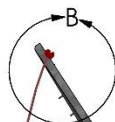
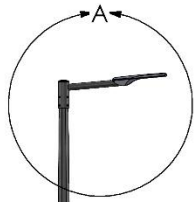
Step 4 – Securing the Pole in the maintenance position:

Pass the loose end of the lowering rope through to the now exposed rope cleat (ROPE CLEAT #2) at the base of the column and commence the required work. Ensure suitable rigging gloves are worn at all times to prevent occurrence of rope burn.

Step 5 – Returning the Pole to operating position:

Whilst maintaining tension on the lowering rope, unfasten the rope from the rope cleat (ROPE CLEAT #2) and with a steady smooth motion, avoiding any jerking movements, raise the Pole back to the vertical position, and lock it in position by refastening the M12 skirt securing bolt (FASTNER #1) and the failsafe bolt (FASTENER #2) located as shown in Figure 1

Note: All equipment ie. Headframes, Lights, Antennas, Cameras etc. must be installed on the Pole prior to erection of the Pole. This Pole cannot be operated without the top equipment mounted.



Ensure suitable rope is used and that it is securely tethered to the Eye Nut/ Lifting Lug

Check to see that counter weights (if any) are secure.

DETAIL B
SCALE 1 : 35

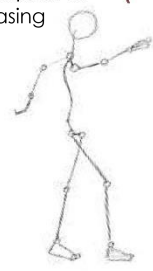


The Luminaire/s you specify are considered when designing the Pole for both Weight and Wind Loading. Do not change the quantity or fitting type without consultation.

DETAIL A
SCALE 1 : 25

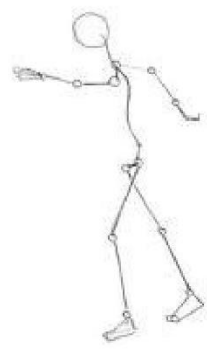
IMPORTANT
When undoing the hold down bolt to release the skirt, and prior to hinging the pole, check to make sure that there is no undue load. If necessary secure with a rope which can be eased of.

Secure with Rope prior to releasing



NORMAL POSITION

SERVICE POSITION



BS10MTOMHP-25212 - DWG A

Raising and Lowering Procedure